

NOTES cont.

16. REAR ACCESS DUCTS CAN BE REPOSITIONED TO FRONT ACCESS TO FACILITATE DIFFERING LOCATIONS.

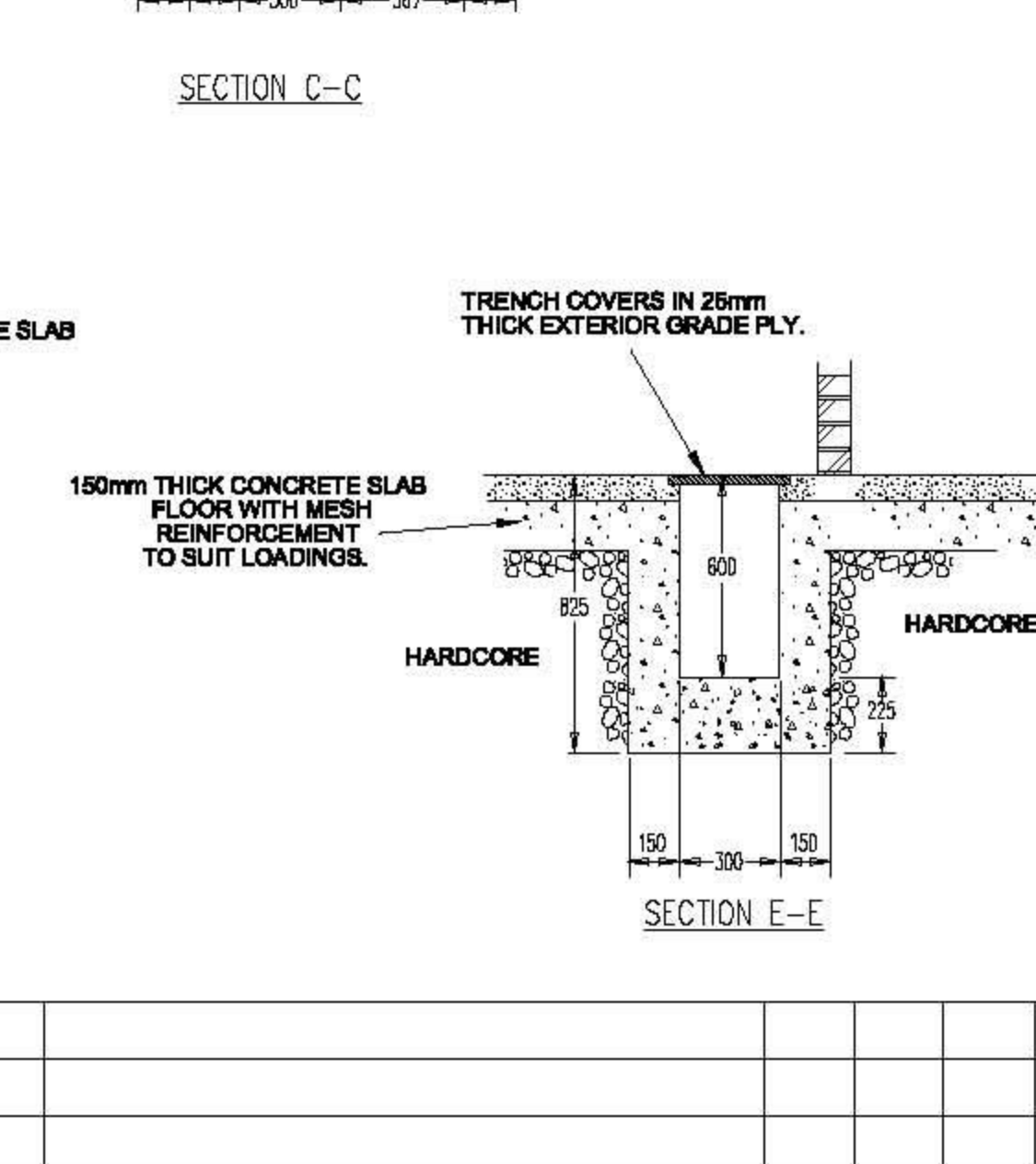
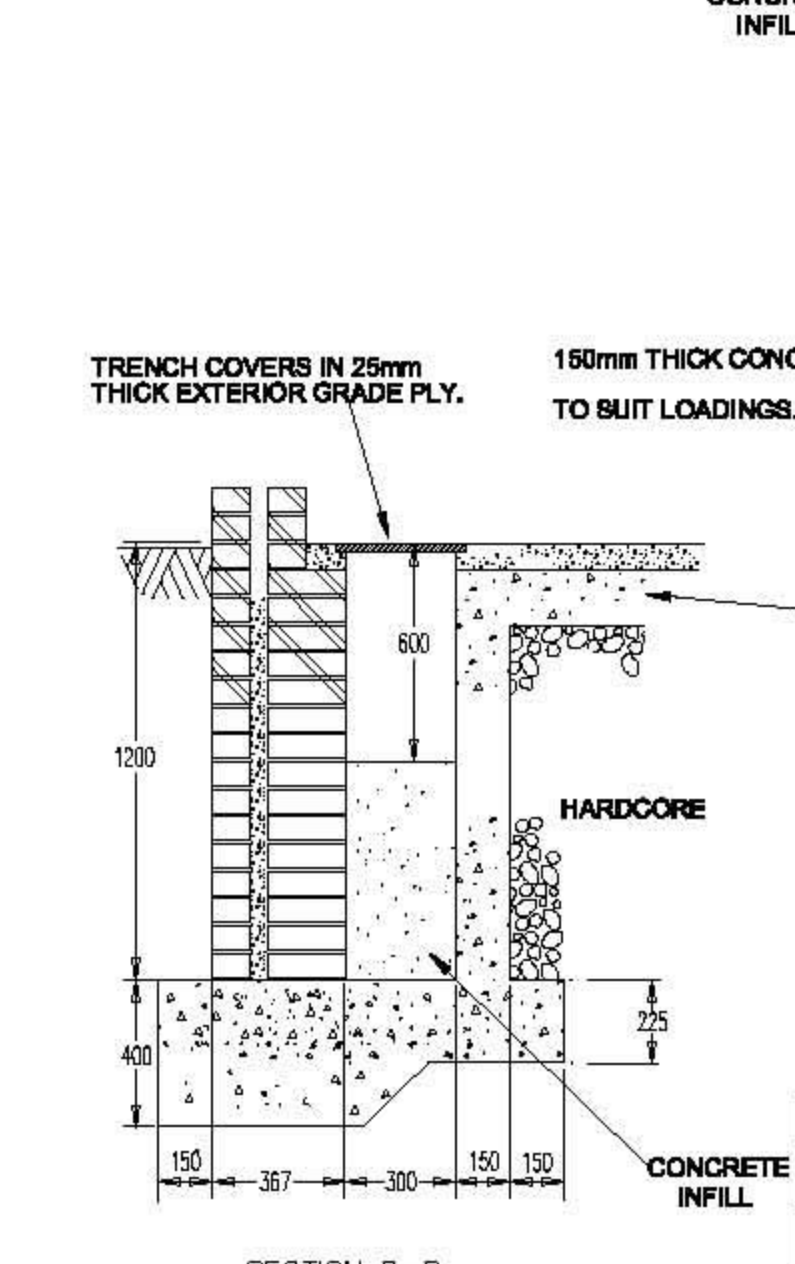
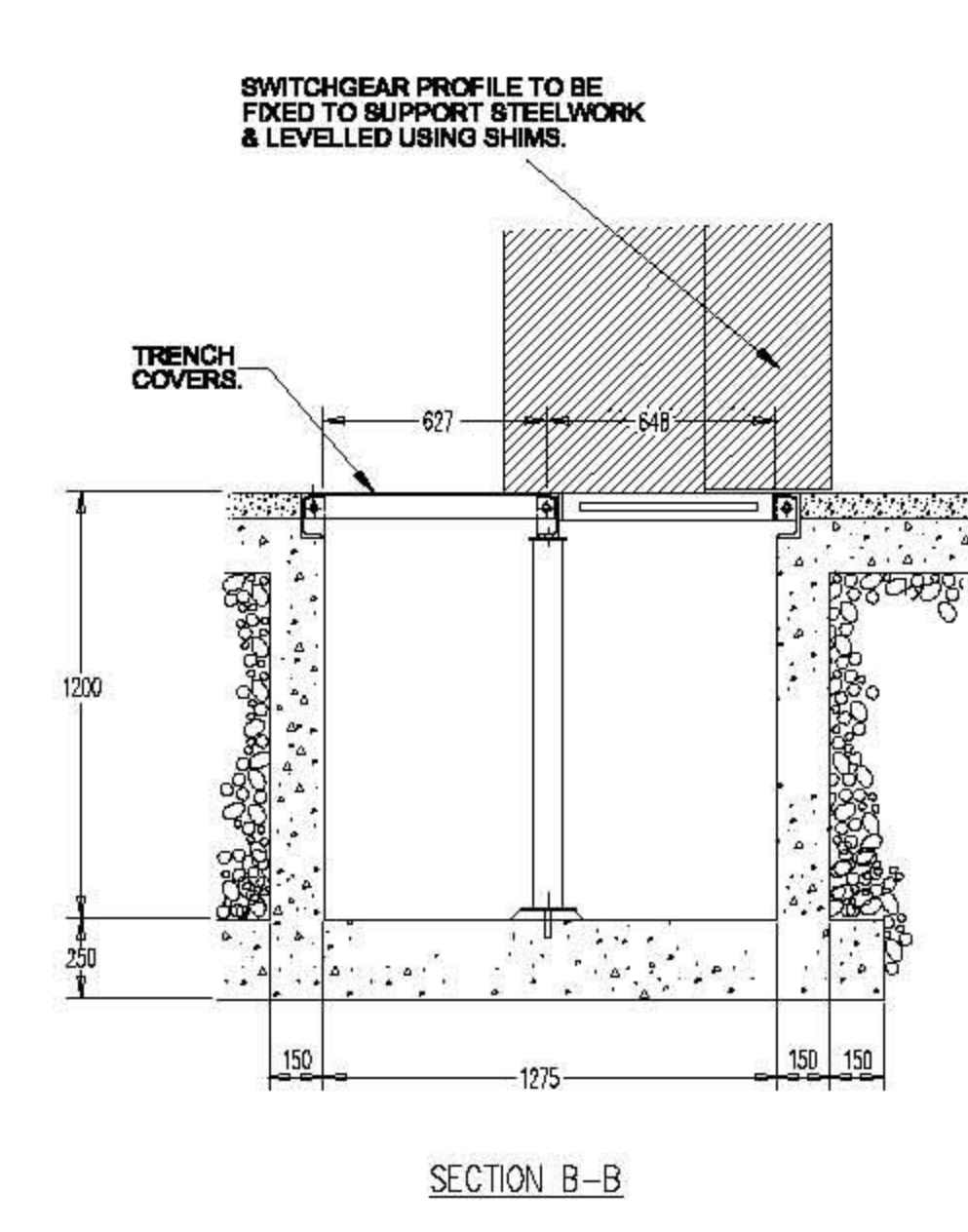
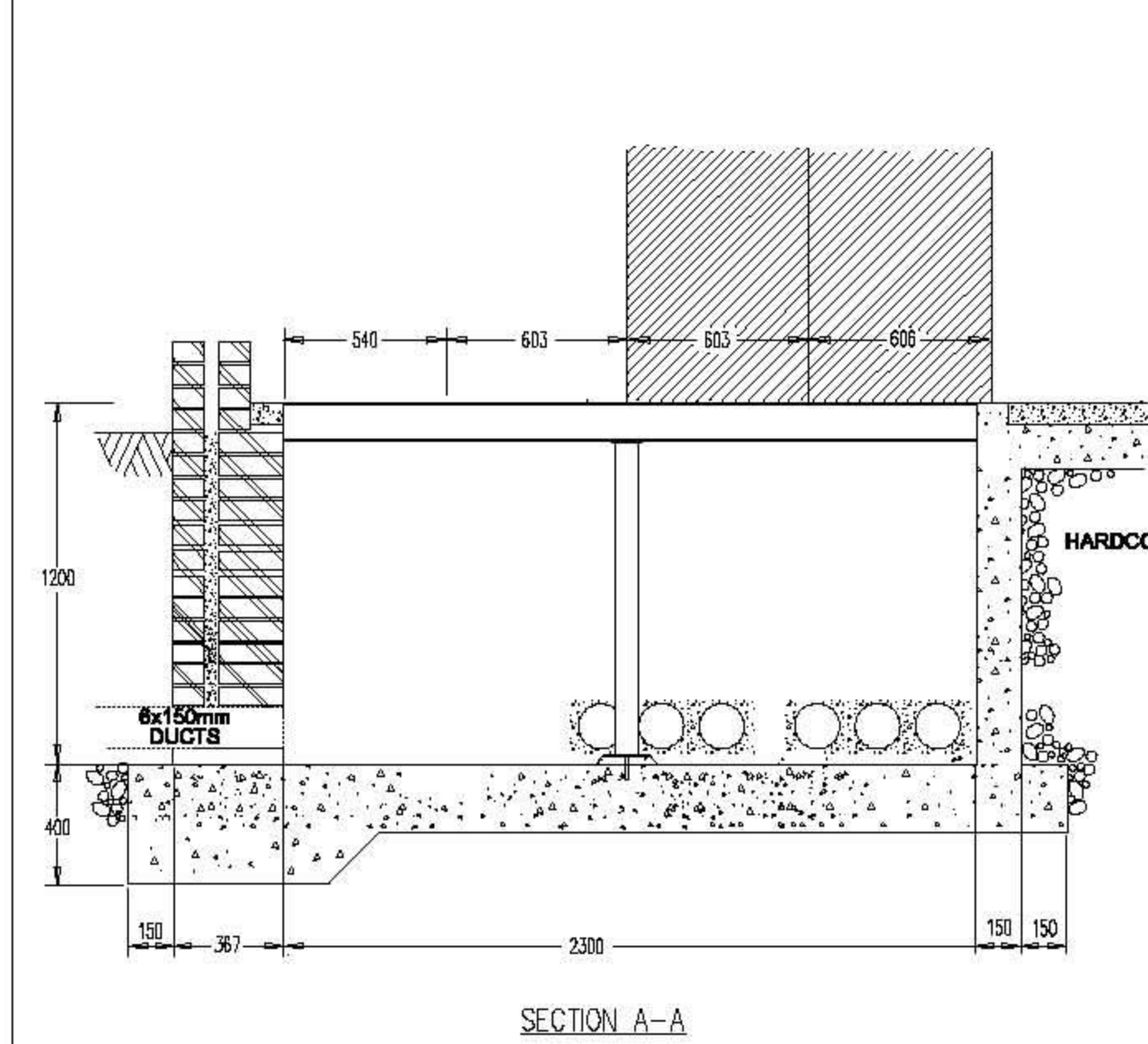
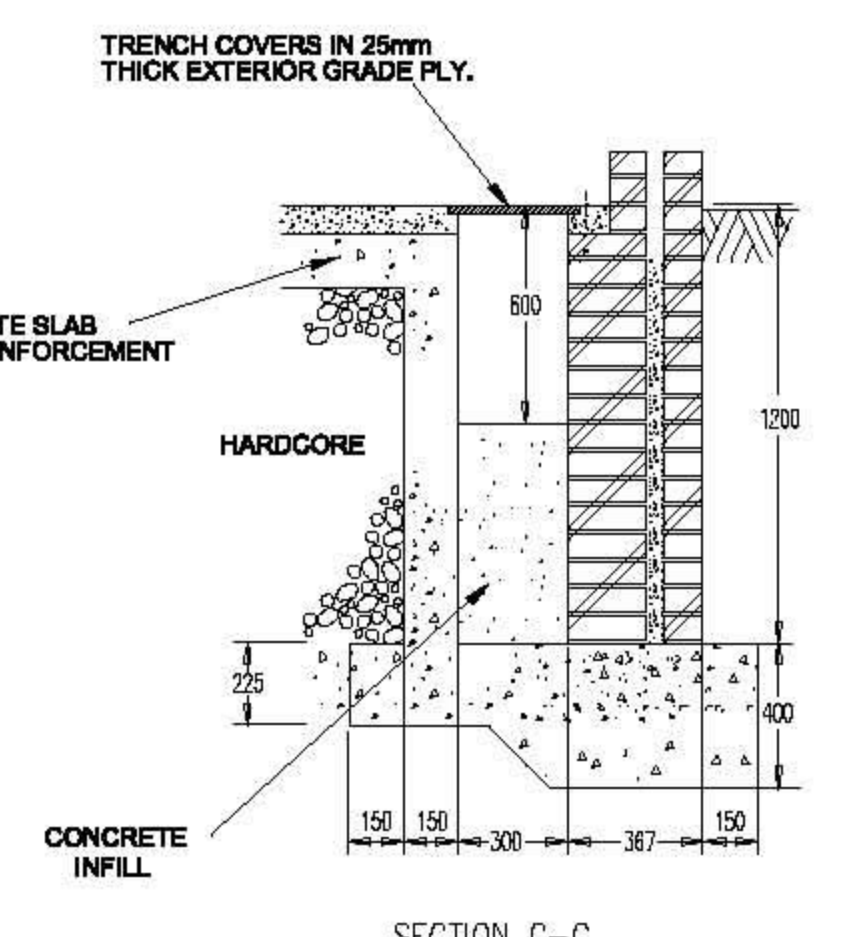
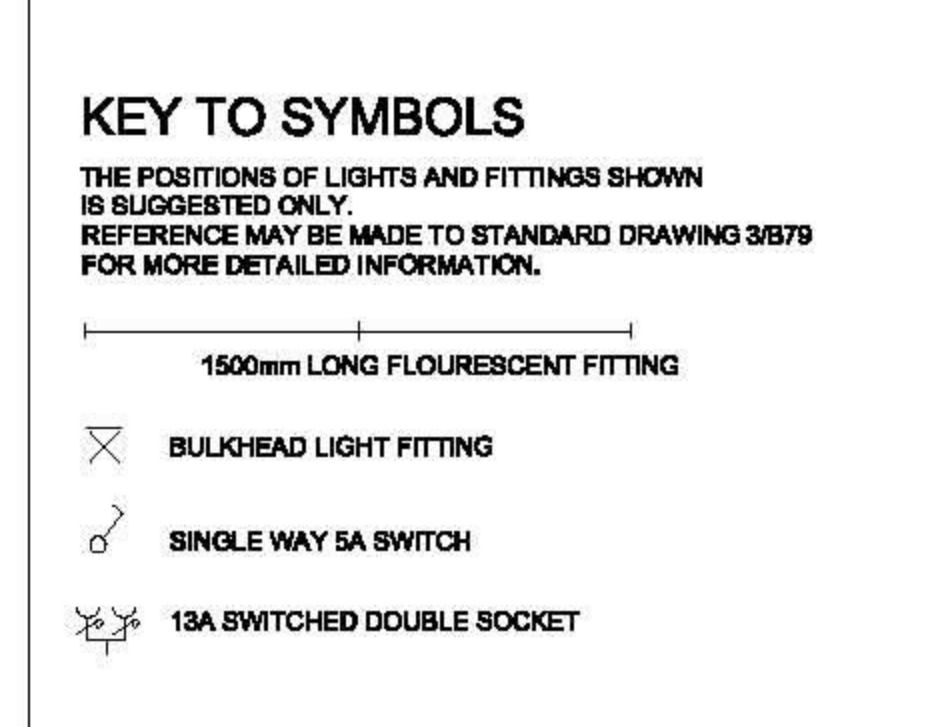
17. DOUBLE DOORS TO BE FITTED WITH REMOVABLE TRANSOM PANEL ABOVE DOOR.

SWITCHGEAR MOUNTING FRAME

LEVELLING REQUIREMENTS:
EACH PROFILE +/- 1mm per METRE.

PARALLELISM OF PROFILES:
WITHIN A RANGE OF ONE METRE +/- 1mm.

- NOTES**
- ALL DIMENSIONS ARE IN mm, unless OTHERWISE STATED.
 - ALL DIMENSIONS MUST BE CHECKED ON SITE BEFORE WORK COMMENCES.
 - CABLE VOIDS THRO' MAIN AND MULTICORE CABLE TRENCHES TO ENGINEERS DESIGN.
i.e. FRONT FACE OF MULTICORE TRENCH MAY BE ENTIRELY OMITTED DEPENDING ON FLOOR SLAB DESIGN/SPAN, ETC.
 - TRADITIONAL FOUNDATION LAYOUT SHOWN AS RAFT TYPE BASED ON PREVIOUS CONSTRUCTION METHOD BUT STRIP FOUNDATIONS MAY BE EMPLOYED - GROUND CONDITIONS PERMITTING.
 - ALL EXPOSED CABLE TRENCH AREAS TO HAVE 40 x 25mm REBATES FORMED WITH PROPRIETARY ANGLE KERB CAST-IN TO TAKE 25mm CABLE TRENCH COVERS.
 - BOTTOMS OF CABLE TRENCHES TO HAVE SUMP/OPEN TRAP FOR ESCAPE OF TRAPPED WATER (TO SUITABLE DRAIN) ELSEWHERE ON SITE AND/OR FINISHED TO FALL.
 - ALL BRICKWORK BELOW GROUND LEVEL (UNLESS RC CONSTRUCTION) TO BE CLASS 'B' SEMI-ENGINEERING, ONE BRICK THICK TO ALL CABLE TRENCHES.
 - GENERAL PLAN AND SETTING DIMENSIONS ARE TO BE ADHERED TO. CONSTRUCTION/DETAIL DIMENSIONS, ETC. TO ENGINEERS DESIGN.
 - STRUCTURAL PIERS AND WINDPOSTS, ETC. MUST NOT RESTRICT MIN. INTERNAL PLAN DIMENSIONS AND STEEL SECTION FLANGES SHOULD BE FLUSH OR HAVE MIN. PROJECTION FROM BLOCKWORK FACE.
 - SWITCH HOUSE FLOOR FINISH TOLERANCES:
SWITCH GEAR SUPPORT STEELWORKS TO BE +/- 1.5mm & FLOOR SLAB (POWER FLOATED OR MODIFIED GRANITE AGGREGATE SCREED) TO BE +/- 1.5mm OVER 3m LONG STRAIGHT EDGE IN ANY DIRECTION.
 - CABLE DUCT POSITIONS AND SIZE IN ACCORDANCE WITH ELECTRICAL CABLE LAYOUT. IF THRO' RC CONCRETE THEN CONSIDERATION SHOULD BE GIVEN TO FORMING 'HOLES' RATHER THAN CASTING IN DUCTS.
DUCT BANKS FORMED THROUGH BRICKWORK SHOULD USE VITRIFIED CLAY DUCTS, SURROUNDED WITH AND BEDDED ON FINE CONCRETE WITH INTL. & EXTL. FACES TROWELLED HARD AND SMOOTH. DUCT BANKS MAY ALSO BE GROUTED-IN.
ALL DUCT BANKS TO HAVE P.C. LINTELS OVER.
 - BUILDING IS REQUIRED TO BE WATER AND AIRTIGHT.
 - ALL STRUCTURAL STEELWORK (ROOF BEAMS, JOISTS BRACING, WALL WIND POSTS ETC.) TO BE GALVANISED
 - WHERE WIND POSTS ARE UTILISED TO STIFFEN SWITCH HOUSE WALLS, FLANGES SHOULD BE POSITIONED IN THE CAVITY. WHERE FLANGES ARE REQUIRED TO BE POSITIONED INTERNALLY, THESE SHOULD BE AS FLUSH AS POSSIBLE TO ADJOINING BLOCKWORK.
 - SWITCHGEAR TYPE NOMINALLY ALSTOM TYPE WS ADDITIONAL SPARE BAY FOR 3 PANEL RMU UNIT.
STEELWORK ALTERATIONS MAY BECOME APPLICABLE DUE TO USE OF OTHER SWITCHGEAR.
 - SWITCH HOUSE DESIGN MODULAR INCREASE 5600mm LENGTH WITH ASSOCIATED TRENCH'S FOR EACH ADDITIONAL CIRCUIT BREAKER/PROTECTION PANEL.



		TITLE	
		SECTIONS AND DETAILS PROPOSED SWITCH ROOM FOR HEMSBY	
DRAWING No.		REV	
SLP-0603BD-G-1001-07		A1	
REV	DESCRIPTION	DATE	ORIGIN SCALE
A1	ISSUED FOR PLANNING APPLICATION	31.07.07	MM GP 1:20
REV	DESCRIPTION	DATE	CHECKED
		31.07.07	GP