



**GREAT YARMOUTH**  
BOROUGH COUNCIL

# **UNEMPLOYMENT BRIEFING**

February 2012

## **Introduction**

This is the February 2012 issue of the Economic Development Unit's Unemployment Briefing. The Office of National Statistics releases unemployment data on its NOMIS website at monthly intervals ([www.nomisweb.co.uk](http://www.nomisweb.co.uk)) and this briefing is produced using that data

This report contains unemployment information for the month, presenting this data for travel to work areas, local authorities, wards, counties, regions and nationally.

Due to a change in definitions in July 2010, unemployment rates cannot be compared to those quoted in Unemployment Briefings prior to this date. Working age population now refers to those aged 16-64, both male and female. A second change is that the post-2009 local English authority list will now be used, meaning that there are now 326 local authorities in England rather than 354, meaning that local authority data can only be compared from October 2011.

## **Travel to Work Area**

Sixteen of the seventeen Travel to Work Areas (TTWAs) experienced an increase in unemployment level from January.

Peterborough TTWA saw the largest increase in numerical terms with an additional 557 claimants, an increase of 7.2 percent; whilst Thetford & Mildenhall experienced the largest percentage increase, with a 7.8 percent increase in claimants in January.

Clacton was the only TTWA to experience a fall in claimant numbers, with a reduction of 0.9 percent.

Great Yarmouth TTWA experiencing an increase of 1.4 percent, with an additional 61 claimants.

In total, there were 4,269 claimants in Great Yarmouth, representing 6.8 percent of the 16-64 year old population.

**Table 1 – Travel to Work Areas**

	Claimants January 12	Claimants February 12	Number Change	Percentage Change	Prop'n of Resident Population (16-64)
Bedford	4,626	4,712	86	1.9	3.8
Bury St Edmunds	1,168	1,216	48	4.1	2.2
Cambridge	5,651	5,872	221	3.9	2.1
Chelmsford & Braintree	6,750	6,871	121	1.8	2.9
Clacton	2,769	2,745	-24	-0.9	5.5
Colchester	4,580	4,790	210	4.6	3.1
Cromer & Sheringham	1,077	1,135	58	5.4	3.2
<b>Great Yarmouth</b>	<b>4,208</b>	4,269	61	1.4	6.8
Harlow & Bishop's Stortford	5,765	5,967	202	3.5	2.9
Huntingdon	2,561	2,646	85	3.3	2.5
Ipswich	8,154	8,451	297	3.6	3.4
King's Lynn & Fakenham	3,233	3,269	36	1.1	3.5
Lowestoft & Beccles	3,580	3,646	66	1.8	4.4
Luton & Watford	14,794	15,226	432	2.9	3.5
Norwich	8,725	8,943	218	2.5	3.3
Peterborough	7,734	8,291	557	7.2	4.1
Southend & Brentwood	13,910	14,352	442	3.2	4.0

Source: ONS Crown Copyright

Note: Rates for 2001 TTWAs from 2008 onwards are calculated using the mid-2007 resident population aged 16-64.

## Local Authority Areas

All seven districts in Norfolk experienced an increase in unemployment levels.

Great Yarmouth experienced an increase of 1.3 percent between January and February, taking unemployment to 7.0 percent. There was an additional 55 claimants, meaning that the total number of claimants was 4,172.

Since October 2011 we have been using the post 2009 local English authorities, ranking the top 50 in order from highest unemployment rate as before, but now for 326 local authorities rather than 354.

Great Yarmouth remains ranked 13<sup>th</sup> for February, whilst Ipswich remains in the top 50, falling two places to 47<sup>th</sup>.

Great Yarmouth's share of Norfolk's unemployment fell from 21.7 percent to 21.4 percent in February. This is higher than twelve months ago when the share was 21.2 percent.

## Map 1 – Norfolk Local Authorities

February 2012

claimant count with rates and proportions

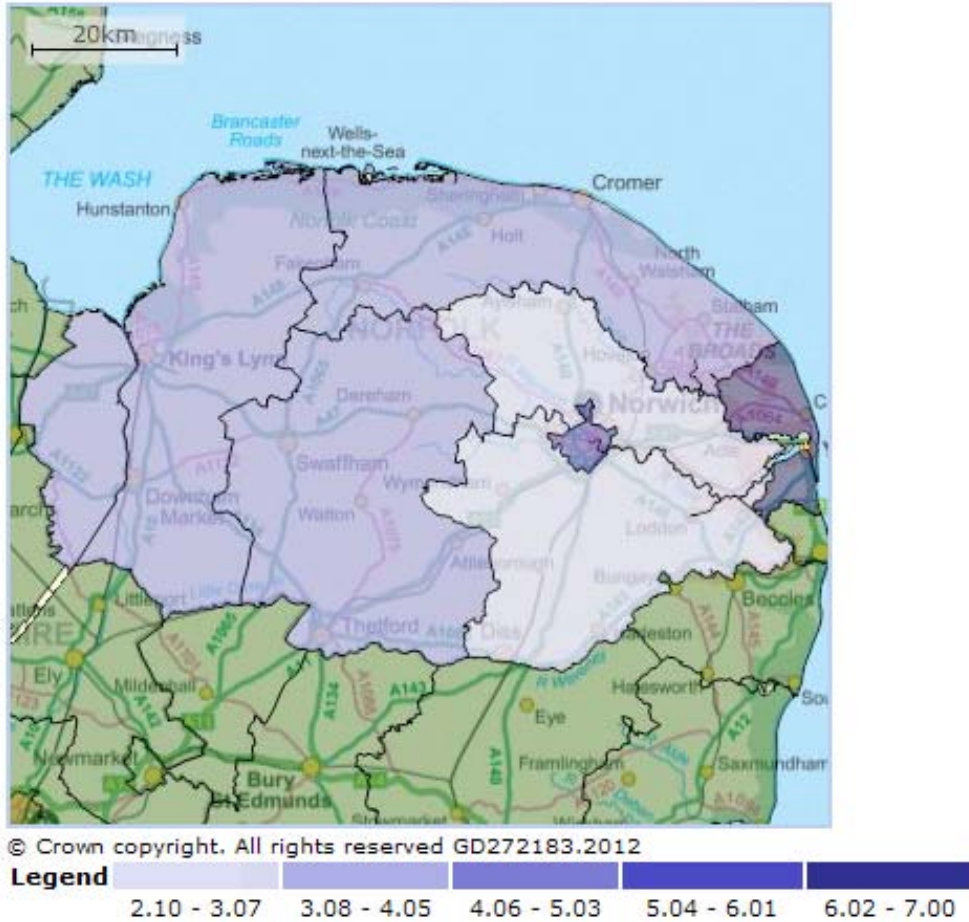


Table 2 - Norfolk Local Authorities

	Claimants January 12	Claimants February 12	Number Change	Percentage Change	Prop'n of Resident Population (16-64)
Breckland	2,381	2,536	155	6.5	3.2
Broadland	1,499	1,582	83	5.5	2.1
<b>Great Yarmouth</b>	<b>4,117</b>	<b>4,172</b>	<b>55</b>	<b>1.3</b>	<b>7.0</b>
King`s Lynn and West Norfolk	2,983	3,015	32	1.1	3.6
North Norfolk	1,696	1,779	83	4.9	3.1
Norwich	4,664	4,720	56	1.2	4.6
South Norfolk	1,676	1,733	57	3.4	2.4

Source: ONS Crown Copyright

Note: Rates for local authorities from 2011 onwards are calculated using the mid-2010 resident population aged 16-64.

**Table 3 – National Local Authority Areas**

Top 50 authorities with the highest proportion of resident claimants.

	Claimants February 12	Prop'n of Resident Population (16-64)	
Kingston upon Hull, City of	15,604	8.6	1
Middlesbrough	7,616	8.1	2
Wolverhampton	12,310	8.1	3
Hartlepool	4,678	8.0	4
Birmingham	52,135	7.8	5
Sandwell	14,146	7.7	6
Newham	11,905	7.4	7
Blackpool	6,477	7.4	8
Hackney	11,186	7.3	9
Liverpool	22,302	7.3	10
South Tyneside	7,178	7.2	11
North East Lincolnshire	7,115	7.2	12
<b>Great Yarmouth</b>	<b>4,172</b>	<b>7.0</b>	<b>13</b>
Knowsley	6,753	7.0	14
Redcar and Cleveland	5,939	6.9	15
Walsall	10,884	6.9	16
Waltham Forest	10,225	6.7	17
Nottingham	14,676	6.6	18
Barking and Dagenham	7,567	6.6	19
Haringey	10,544	6.6	20
Tower Hamlets	11,400	6.5	21
Hastings	3,553	6.5	22
Thanet	5,069	6.4	23
Leicester	13,037	6.3	24
Rochdale	8,169	6.2	25
Corby	2,162	6.1	26
Doncaster	11,252	6.1	27
Darlington	3,800	6.0	28
Halton	4,647	6.0	29
Oldham	8,234	6.0	30
Bradford	19,774	6.0	31
Brent	10,035	5.9	32
Stockton-on-Tees	7,338	5.9	33
Lambeth	12,377	5.8	34
Lewisham	10,919	5.8	35
Sunderland	10,969	5.8	36
Manchester	20,546	5.7	37
Stoke-on-Trent	8,841	5.7	38
Peterborough	6,312	5.6	39
Enfield	10,787	5.6	40
Gateshead	6,993	5.6	41
Salford	8,595	5.6	42

Southend-on-Sea	5,647	5.5	43
Derby	8,867	5.5	44
Lincoln	3,377	5.5	<b>45</b>
Rotherham	8,865	5.5	46
<b>Ipswich</b>	<b>4,551</b>	<b>5.4</b>	<b>47</b>
Greenwich	8,340	5.4	48
Burnley	2,893	5.4	49
Sefton	9,189	5.4	50

Source: ONS Crown Copyright

Notes: Rates for local authorities from 2011 onwards are calculated using the mid-2010 resident population aged 16-64.

## Ward Figures

Nine wards in Great Yarmouth experienced an increase in unemployment between January and February. Central and Northgate saw the largest increase in terms of numbers, whilst Claydon experienced the largest proportional increase, seeing a 7.6 percentage point increase in unemployment in February.

Nelson ward continues to have the highest number of unemployed, with 979 claimants, up 8 from January.

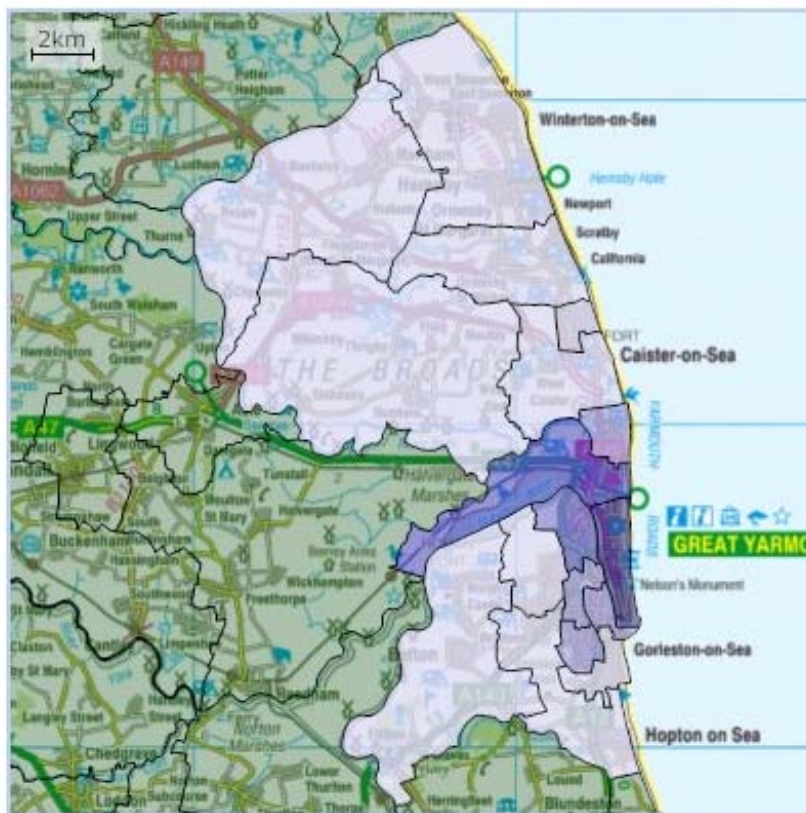
Seven wards saw a fall in unemployment, with Bradwell South and Hopton experiencing the largest fall in both percentage and numerical terms, with a reduction of 13.2 percent.

Caister South saw no change in unemployment between January and February.

## Map 2 – Wards

### February 2012

claimant count with rates and proportions



© Crown copyright. All rights reserved GD272183.2012

#### Legend

2.41 - 5.50    5.51 - 8.60    8.61 - 11.60    11.61 - 14.70    14.71 - 17.81

**Table 4 – Ward Figures**

	Claimants January 12	Claimants February 12	Number Change	Percentage Change	Prop'n of Resident Population (16-64)
Bradwell North	102	96	-6	-5.9	2.4
Bradwell South and Hopton	121	105	-16	-13.2	2.6
Caister North	97	98	1	1.0	3.6
Caister South	114	114	0	0.0	4.5
Central and Northgate	714	749	35	4.9	12.6
Claydon	344	370	26	7.6	7.8
East Flegg	121	129	8	6.6	4.2
Fleggburgh	48	43	-5	-10.4	2.7
Gorleston	126	130	4	3.2	4.1
Lothingland	134	130	-4	-3.0	3.5
Magdalen	252	260	8	3.2	6.2
Nelson	971	979	8	0.8	17.8
Ormesby	87	93	6	6.9	3.5
Southtown and Cobholm	373	370	-3	-0.8	10.4
St Andrews	196	188	-8	-4.1	6.3
West Flegg	114	112	-2	-1.8	3.7
Yarmouth North	203	206	3	1.5	8.1

Source: ONS Crown Copyright

### **Age and Duration of Claimants in Great Yarmouth**

Youth unemployment (16 – 24) accounts for one third of unemployment in Great Yarmouth. Adding the 25 – 29 age group to this, 46.7 percent of unemployed are under the age of 30.

Eighty two percent of claimants have been unemployed for six weeks or more, this is up from 81.7 percent in January.

**Table 5 – Age Breakdown**

	<b>Number of Claimants</b>	<b>Prop'n of unemployed</b>
Aged under 17	0	0.0
Aged 17	15	0.4
Aged 18	180	4.3
Aged 19	245	5.9
Aged 20-24	980	23.5
Aged 25-29	525	12.6
Aged 30-34	385	9.2
Aged 35-39	375	9.0
Aged 40-44	390	9.4
Aged 45-49	400	9.6
Aged 50-54	340	8.1
Aged 55-59	275	6.5
Aged 60 and over	65	1.6

Source: ONS Crown Copyright

Notes: Percentage given is that of particular age/duration as a proportion of all age/durations within that particular gender. Figures are rounded to the nearest 5.

**Table 6 – Duration Breakdown**

	<b>Number of Claimants</b>	<b>Prop'n of unemployed</b>
one week or less	110	2.6
over 1 and up to 2 weeks	105	2.5
over 2 and up to 4 weeks	230	5.5
over 4 and up to 6 weeks	310	7.4
over 6 and up to 8 weeks	145	3.5
over 8 and up to 13 weeks	550	13.2
over 13 and up to 26 weeks	1,055	25.3
over 26 and up to 39 weeks	495	11.8
over 39 and up to 52 weeks	390	9.4
over 52 and up to 65 weeks	295	7.1
over 65 and up to 78 weeks	170	4.1
over 78 and up to 104 weeks	135	3.2
over 104 and up to 156 weeks	135	3.2
over 156 and up to 208 weeks	40	1.0
over 208 and up to 260 weeks	10	0.2
over 260 weeks	0	0.0

Source: ONS Crown Copyright

Notes: Rates for local authorities from 2011 onwards are calculated using the mid-2010 resident population aged 16-64. Figures rounded to the nearest 5.

## East and South East County Figures

Unemployment in Norfolk rose over the past month with 521 people joining the register, an increase of 2.7 percent. In total, there were 19,537 claimants representing 3.7 percent of the Norfolk population.

**Table 7 – County**

	<b>Claimants February 12</b>	<b>Prop'n of Resident Population (16- 64)</b>
Southend-on-Sea	5,533	5.3
Peterborough	5,838	5.2
Luton	6,396	4.9
Isle of Wight	3,964	4.7
Medway	7,416	4.4
Thurrock	4,373	4.2
Milton Keynes	6,495	4.0
Bedford	4,221	4.0
Slough	3,388	3.8
Brighton and Hove	6,784	3.7
Portsmouth	5,412	3.7
<b>Norfolk</b>	<b>19,016</b>	<b>3.6</b>
Reading	3,797	3.5
East Sussex	10,329	3.4
Kent	30,297	3.4
Southampton	5,870	3.4
Suffolk	14,443	3.3
Essex	28,256	3.2
Hertfordshire	18,874	2.6
West Sussex	12,018	2.5
Bracknell Forest	1,770	2.3
Cambridgeshire	9,101	2.2
Hampshire	17,496	2.1
Buckinghamshire	6,361	2.0
Windsor and Maidenhead	1,889	2.0
Oxfordshire	7,854	1.8
West Berkshire	1,798	1.8
Surrey	12,550	1.7
Wokingham	1,468	1.4

Source: ONS Crown Copyright

Notes: Rates for regions and countries from 2011 onwards are calculated using the mid-2010 resident population aged 16-64.

## Regional Figures

Regionally, unemployment increased by 3,966 claimants from last month, causing an increase in the proportion of unemployed by 0.2 percentage points for the East. The number of claimants joining the register increased in all regions.

**Table 8 – Regional**

	<b>Claimants February 12</b>	<b>Prop'n of Resident Population (16- 64)</b>
East	124,438	3.4
East Midlands	116,374	4.0
London	239,557	4.4
North East	95,956	5.6
North West	211,964	4.7
South East	62,778	5.4
South West	151,896	4.4
West Midlands	152,082	2.8
Yorkshire and The Humber	98,939	3.0
Wales	84,947	4.5
Scotland	175,134	5.1
Northern Ireland	171,924	5.0

Source: ONS Crown Copyright

Notes: Rates for regions and countries from 2011 onwards are calculated using the mid-2010 resident population aged 16-64.

## National Figures

The February unemployment count for England, Great Britain and the United Kingdom are as follows:

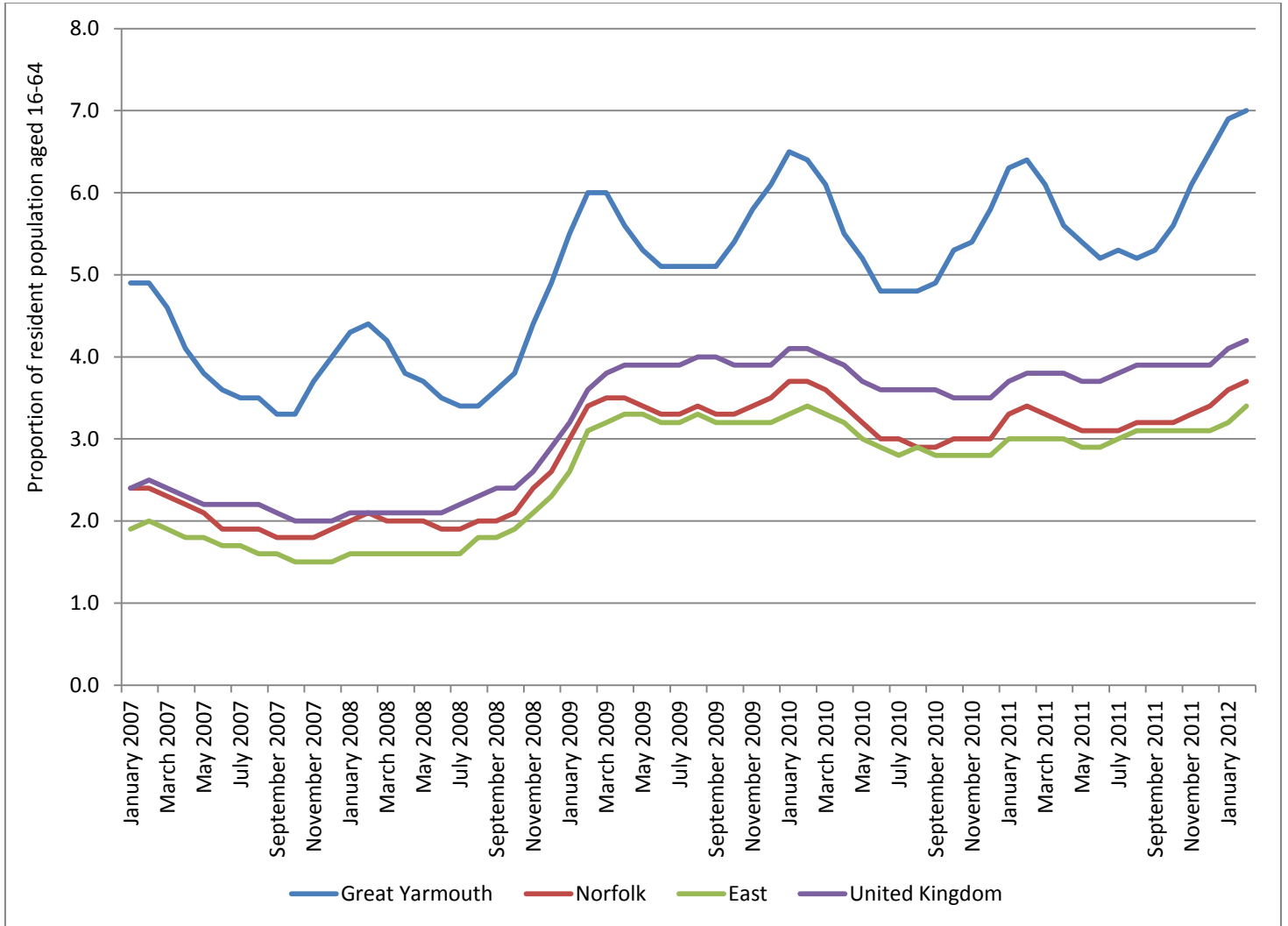
**Table 9 – National**

	<b>Claimants January 12</b>	<b>Prop'n of Resident Population (16- 64)</b>
England	1,386,368	4.1
Great Britain	1,623,211	4.1
United Kingdom	1,685,989	4.2

Source: ONS Crown Copyright

Notes: Rates for regions and countries from 2011 onwards are calculated using the mid-2010 resident population aged 16-64.

## Unemployment trend since January 2007



### Further Information

If you would like any further information or have any comments regarding this briefing, please contact Chris Macdonald on 01493 335645 or email [chris.macdonald@great-yarmouth.gov.uk](mailto:chris.macdonald@great-yarmouth.gov.uk)